

364 Kings Road, Ashton-Under-Lyne, OL6 9EW

Offers Over £315,000

We have something quite special for you! This beautiful family home has so much to offer, with an impressive floorplan giving the space needed for a growing family. With a stylish decor, and the added bonus of plenty of driveway parking leading to a detached double garage.

If interior design is your thing, you will LOVE this! Once inside you are welcomed through the entrance hallway with tiled floor, there is a good sized lounge for cosy nights, then through into the heart of this home, the open plan living, kitchen & dining room. With a cast iron fire, this is perfect for family dinners, entertaining friends or just watching a movie around the fire.

The kitchen area is modern and has a utility room off.

Upstairs are three double bedrooms, the master having an en-suite shower room and an impressive landing area, the loft is boarded and with the space on the landing has scope for a staircase to be built in to create further living space (subject to the correct permissions).

364 Kings Road

, Ashton-Under-Lyne, OL6 9EW

Offers Over £315,000



Entrance Hallway

Front door, doors into the lounge & dining kitchen, stairs rising to the first floor.

Living Room

12'6" x 11'10" (3.80m x 3.60m)

Window to front.

Kitchen/Diner

27'4" x 15'1" (8.33m x 4.60m)

Open plan living at its best! windows to the side elevation. Feature fireplace with cast iron fireplace. Kitchen fitted with a range of floor and wall mounted units with coordinating worksurfaces over.

Utility Room

6'8" x 6'7" (2.02m x 2.00m)

Back door out to the garden, wall mounted gas central heating boiler, plumbing for washing machine.

Landing

Window with pleasant views, this is a great space. What would you do with it? Access to a boarded out loft that also has lighting.

Master Bedroom

12'6" x 15'1" (3.80m x 4.60m)

Window to front, door to en-suite shower room.

En-suite

Suite comprising of a low level w.c, hand wash basin and enclosed shower cubicle.

Bedroom Two

15'9" x 8'6" (4.80m x 2.60m)

Two windows to the rear elevation, built in wardrobes.

Bedroom Three

11'2" x 9'10" (3.41m x 3.00m)

Window to rear,

Family Bathroom

Window to rear, four piece suite comprising of a low level w.c, hand wash basin, free standing bath and a separate enclosed shower cubicle.

Externally

Standing proudly in a larger than average plot, there is a front garden with privacy hedging and garden gate. The side access takes you right up to the detached double garage giving several parking spaces. There is lawned garden and a deck with summer house.

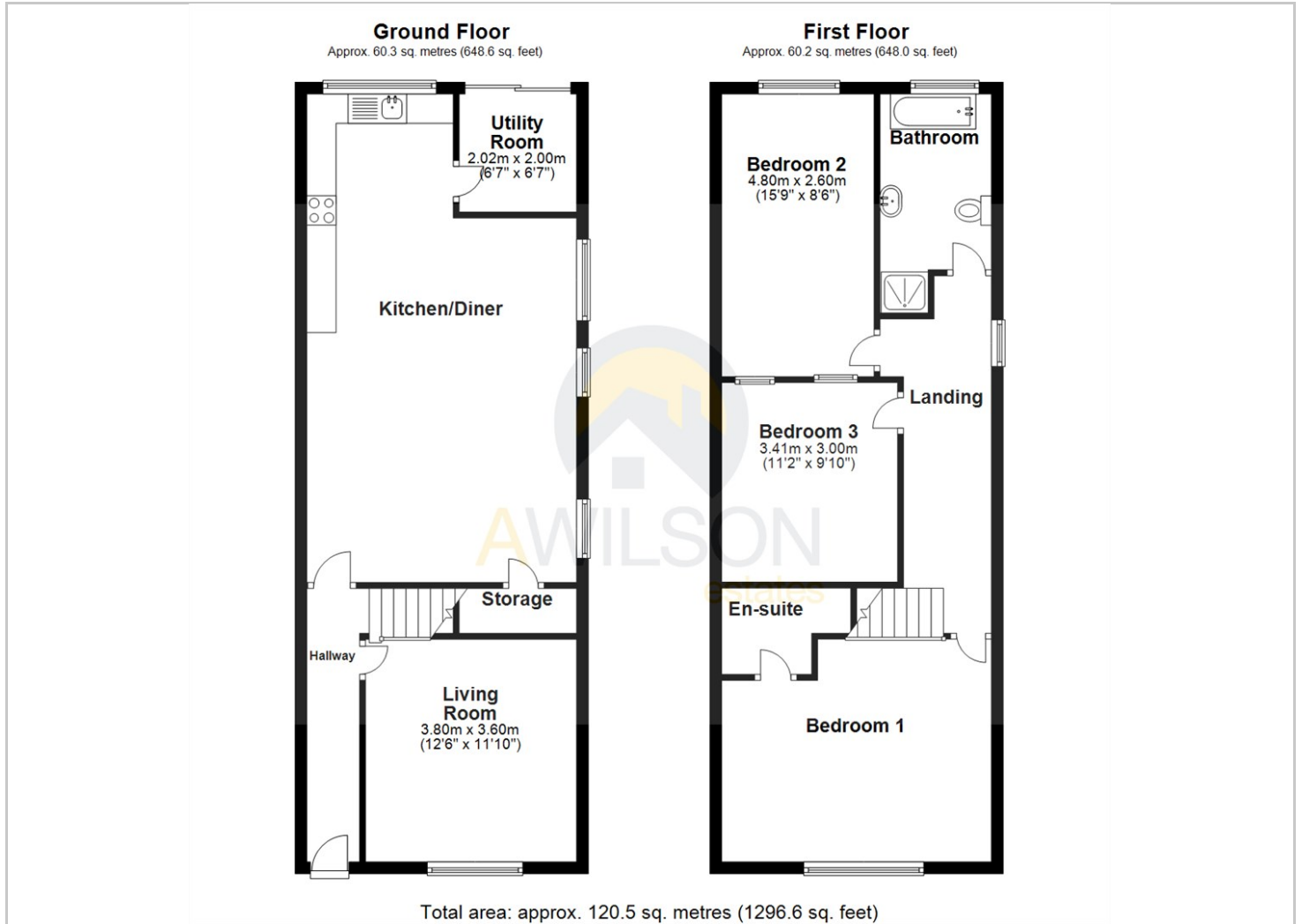
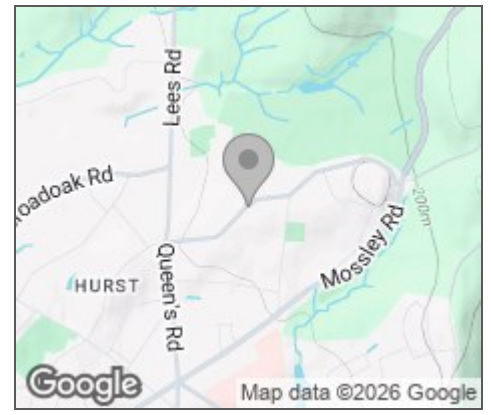
Additional Information

Tenure: Freehold

EPC Rating: E

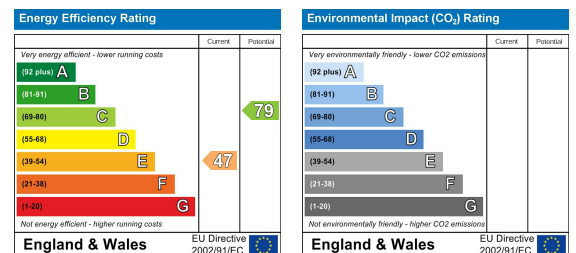
Council Tax Band: B





Viewing

Please contact our A Wilson Estates Ltd Office on 0161 303 0778 if you wish to arrange a viewing appointment for this property or require further information.



These particulars, whilst believed to be accurate are set out as a general outline only for guidance and do not constitute any part of an offer or contract. Intending purchasers should not rely on them as statements of representation of fact, but must satisfy themselves by inspection or otherwise as to their accuracy. No person in this firm's employment has the authority to make or give any representation or warranty in respect of the property.

122 Mottram Road, Stalybridge, Cheshire, SK15 2QU

Lettings 0161 303 9886 Sales 0161 303 0778 Email: info@awilsonestates.com www.awilsonestates.com